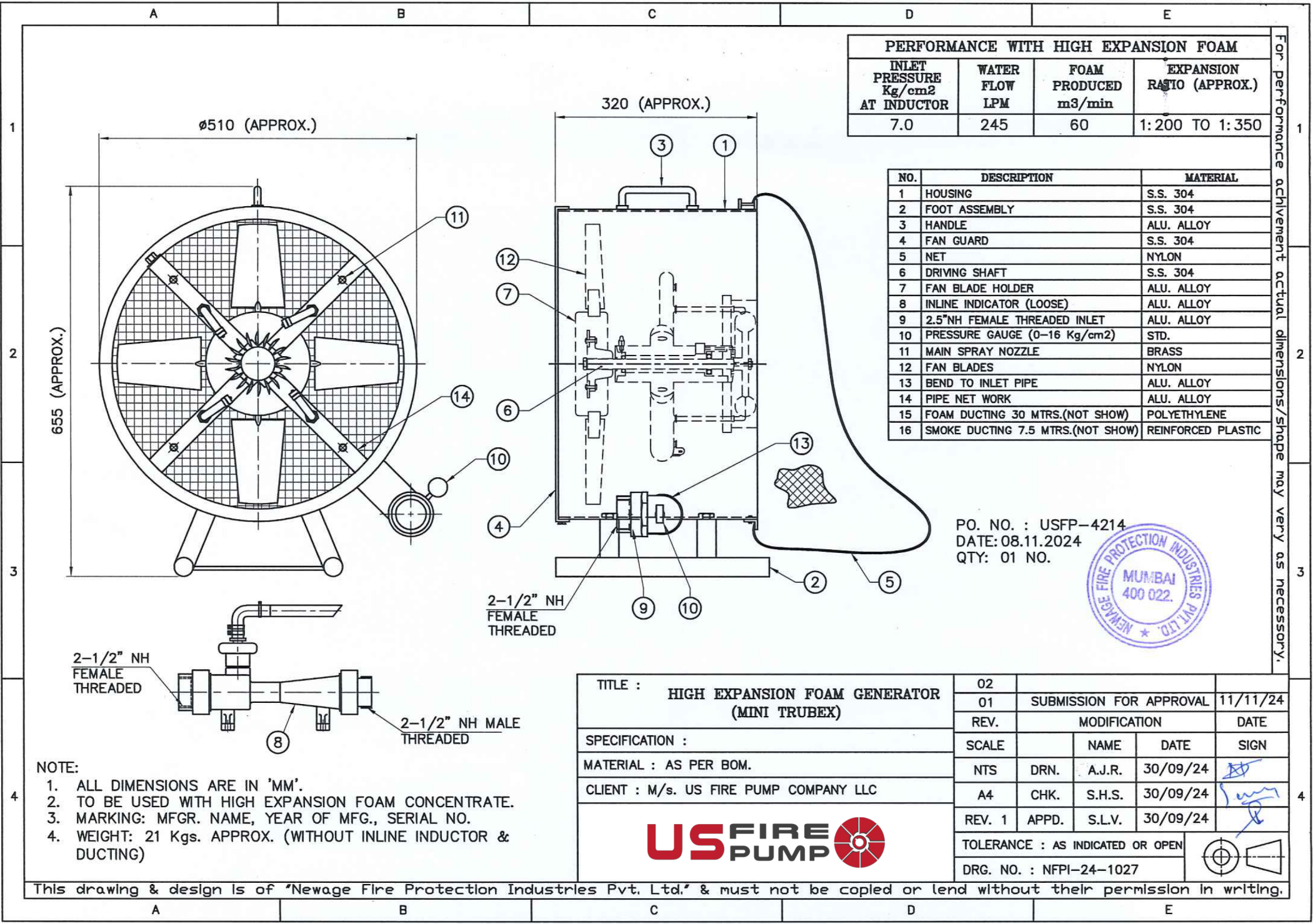


PERFORMANCE WITH HIGH EXPANSION FOAM			
INLET PRESSURE Kg/cm ² AT INDUCTOR	WATER FLOW LPM	FOAM PRODUCED m ³ /min	EXPANSION RATIO (APPROX.)
7.0	245	60	1:200 TO 1:350

NO.	DESCRIPTION	MATERIAL
1	HOUSING	S.S. 304
2	FOOT ASSEMBLY	S.S. 304
3	HANDLE	ALU. ALLOY
4	FAN GUARD	S.S. 304
5	NET	NYLON
6	DRIVING SHAFT	S.S. 304
7	FAN BLADE HOLDER	ALU. ALLOY
8	INLINE INDICATOR (LOOSE)	ALU. ALLOY
9	2.5"NH FEMALE THREADED INLET	ALU. ALLOY
10	PRESSURE GAUGE (0-16 Kg/cm ²)	STD.
11	MAIN SPRAY NOZZLE	BRASS
12	FAN BLADES	NYLON
13	BEND TO INLET PIPE	ALU. ALLOY
14	PIPE NET WORK	ALU. ALLOY
15	FOAM DUCTING 30 MTRS.(NOT SHOW)	POLYETHYLENE
16	SMOKE DUCTING 7.5 MTRS.(NOT SHOW)	REINFORCED PLASTIC

For performance achievement actual dimensions/shape may vary as necessary.



PO. NO. : USFP-4214
 DATE: 08.11.2024
 QTY: 01 NO.



TITLE : **HIGH EXPANSION FOAM GENERATOR (MINI TRUBEX)**

SPECIFICATION :
 MATERIAL : AS PER BOM.
 CLIENT : M/s. US FIRE PUMP COMPANY LLC



02				
01	SUBMISSION FOR APPROVAL			11/11/24
REV.	MODIFICATION			DATE
SCALE		NAME	DATE	SIGN
NTS	DRN.	A.J.R.	30/09/24	
A4	CHK.	S.H.S.	30/09/24	
REV. 1	APPD.	S.L.V.	30/09/24	
TOLERANCE : AS INDICATED OR OPEN				
DRG. NO. : NFPI-24-1027				

- NOTE:
- ALL DIMENSIONS ARE IN 'MM'.
 - TO BE USED WITH HIGH EXPANSION FOAM CONCENTRATE.
 - MARKING: MFGR. NAME, YEAR OF MFG., SERIAL NO.
 - WEIGHT: 21 Kgs. APPROX. (WITHOUT INLINE INDUCTOR & DUCTING)

This drawing & design is of "Newage Fire Protection Industries Pvt. Ltd." & must not be copied or lend without their permission in writing.