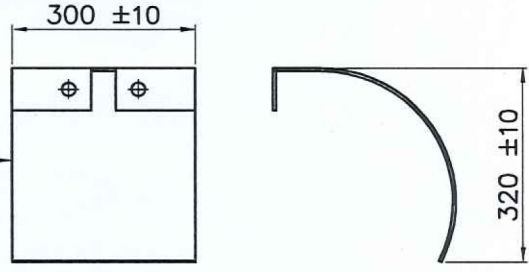


'UL' LISTED FILE#: EX28788

- NOTE:
1. ALL DIMENSION ARE IN 'MM'.
 2. APPROVAL: 'UL' LISTED
 3. MODEL NO.:
 - a) FOAM CHAMBER: NFPI-FC-S-100
 - b) FOAM DEFLECTOR: NFPI-FD-S-200
 4. INLET: 100 NB FLANGE AS PER ANSI B16.5, 150#, F/F.
 5. OUTLET: 200 NB FLANGE AS PER ANSI B16.5, 150#, F/F.
 6. WORKING PRESSURE: 3 TO 7 KG/CM2.
 7. VAPOUR SEAL RUPTURE PRESSURE: 0.7 KG/CM2 TO 1.75 KG/CM2
 8. FLOW: 900 TO 1800 LPM. $\pm 5\%$
 9. FOAM CONCENTRATE: 3% AFFF
 10. FINISH: PAINTED WITH FIRE RED

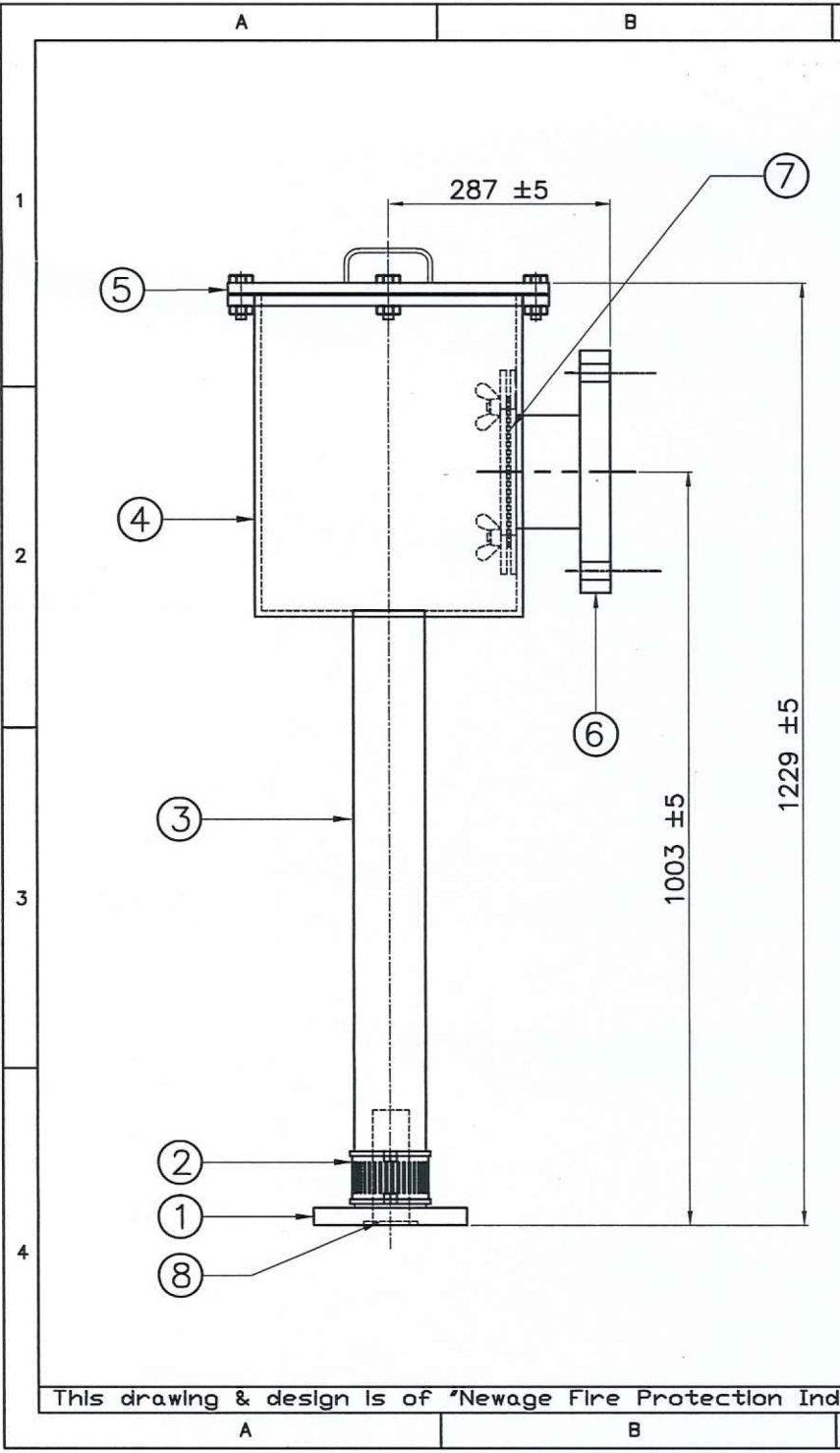


PO. NO. : USFP-4214
 DATE: 08.11.2024
 QTY: 01 NO.



9	FOAM DEFLECTOR	S.S. 316
8	ORIFICE	S.S. 316
7	VAPOUR SEAL	GLASS
6	200mm NB OUTLET FLANGE	S.S. 316
5	INSPECTION COVER	S.S. 316
4	FOAM CHAMBER	S.S. 316
3	FOAM INLET PIPE	S.S. 316
2	AIR STRAINER	S.S. 316
1	100mm NB INLET FLANGE	S.S. 316
SR.NO.	DESCRIPTION	MATERIAL/SPECIFICATION

TITLE :	FOAM CHAMBER WITH VAPOUR SEAL (100 X 200 NB)			02		
				01	SUBMISSION FOR APPROVAL	11/11/24
SPECIFICATION :				REV.	MODIFICATION	DATE
				SCALE	NAME	DATE
MATERIAL :	AS PER BOM			NTS	DRN.	A.J.R. 30/09/24
CLIENT :	M/s. US FIRE PUMP COMPANY LLC			A4	CHK.	S.H.S. 30/09/24
				REV. 1	APPD.	S.L.V. 30/09/24
				TOLERANCE : AS INDICATED OR OPEN		
				DRG. NO. : NFPI-24-1025		



For performance achievement actual dimensions/shape may vary as necessary.

This drawing & design is of "Newage Fire Protection Industries Pvt. Ltd." & must not be copied or lend without their permission in writing.