

## Foam Generator

### Description

For warehouses and storage facilities, our Foam generators make tough fuel and liquid fires a breeze! This foam generator unit includes everything you need to make High Ex foam at the unit as long as you have a water source and foam. With an extremely high expansion ratio of 1:1100, this foam generator can cover a large area in Foam solution!

This unit is equipped with handles and a heavy-duty rubber wheel to make transportation easy. The Fiber Reinforced Polymer casing protects the important mechanisms inside and is corrosion free! This unit can also be used to extract foam from an area with optional collapsible ducting. Use of the bypass valve allows the user to control backpressure.

For more information regarding this unit and other foam generators and their uses, contact [info@usfirepump.com](mailto:info@usfirepump.com) today! NOTE: This unit must be used with high expansion foam.



### Features

- FRP Casing for Corrosion free Mechanism
- Unit Mounted Wheel for Easy Transportation
- Built-In Foam Induction
- Foam Induction: 3% or 6%
- Foam expansion ratio of 1:400 to 1:1100
- Use as foam extractor with optional Ducting
- Nylon net for Foam Expansion included
- By-Pass valve for controlling backpressure

### Application

- Oil and Gas Refineries, Tank Farms, Plants
- Chemical Manufacturers & Storage Facilities
- Aviation Fuel and Equipment Storage
- Marine and Port Terminals

### Compatibility

These units are compatible with most high expansion firefighting foams. Contact us today to see which of our foams is best for you!



**FOR MORE INFORMATION VISIT [WWW.USFIREPUMP.COM](http://WWW.USFIREPUMP.COM)**

US FIRE PUMP COMPANY, LLC  
 27995 James Chapel Road North, Holden, LA 70744  
 MAILING: PO Box 1810, Albany, LA 70711

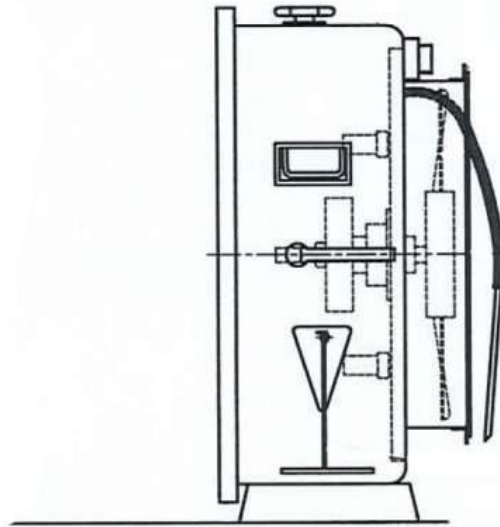
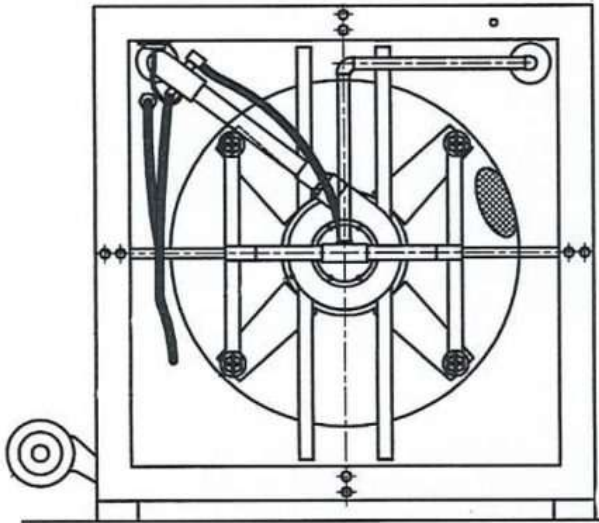
**EMERGENCY 24 HOUR RESPONSE: (225) 209-6551**



Technical Specifications

Model	HEFG	
	Bypass Valve Open	Bypass Valve Closed
Inlet Pressure	100 PSI ( 7 kg/cm <sup>2</sup> )	100 PSI ( 7 kg/cm <sup>2</sup> )
Water Flow	61 GPM (230 LPM)	58 GPM (220 LPM)
Water used to make Foam	38 GPM (145 LPM)	58 GPM (220 LPM)
Expanded Foam Produced	5120 ft <sup>3</sup> /min (145 m <sup>3</sup> /min)	4662 ft <sup>3</sup> /min (132 m <sup>3</sup> /min)
Expansion (±10%)	800-1100	500-750
Inlet	2.5" FNST	
Case Material	Fiber Reinforced Polymer (FRP)	
Fan and Fan Components Material	Aluminum Alloy	
Dimensions L x W x H	35" x 17" x 35" (890 x 430 x 890 mm)	
Weight	145 lbs (65 kg)	
Finish	Red enamel	

**Note:** Specifications are for reference only and subject to change without prior notice.  
 Specifications vary depending on configurations and options.  
 Send inquiries to US Fire Pump for details.



**NOTICE** Although the information and recommendations set forth herein (hereinafter "information") are presented in good faith and believed to be correct as of the date hereof, US FIRE PUMP and its affiliates makes no representations or warranties as to the completeness or accuracy thereof. Information is supplied on the condition that the persons receiving same will make their own determination as to its suitability for their purposes prior to use. In no event will US FIRE PUMP be responsible for damages of any nature whatsoever resulting from the use of or reliance upon information or the product to which the information refers. Nothing contained herein is to be construed as a recommendation to use any product, process, equipment or formulation in conflict with any patent, and US FIRE PUMP makes no representation or warranty, express or implied, that the use thereof will not infringe any patent. NO REPRESENTATIONS OR WARRANTIES, EITHER EXPRESSED OR IMPLIED, OF MERCHANTABILITY, FITNESS FOR A PARTICULAR PURPOSE OR OF ANY OTHER NATURE ARE MADE HEREUNDER WITH RESPECT TO INFORMATION OR THE PRODUCT TO WHICH INFORMATION REFERS.

**FOR MORE INFORMATION VISIT [WWW.USFIREPUMP.COM](http://WWW.USFIREPUMP.COM)**

US FIRE PUMP COMPANY, LLC  
 27995 James Chapel Road North, Holden, LA 70744  
 MAILING: PO Box 1810, Albany, LA 70711

**EMERGENCY 24 HOUR RESPONSE: (225) 209-6551**

