

Hose Ramps

Description

When laying these large diameter hoses on the ground, roadways and paths become non drivable, which can sometimes block access to important areas. Driving over these hoses not only damages them, but it also endangers your personnel and equipment. Protection of these hoses in emergency situations is key, that's why we have developed hose ramps to aid in protecting your crew and equipment. Protect 12", 8" and 6" hoses with our ramps by simply putting these ramps over the hoses, which will allow vehicles and some large equipment to drive over. Use a forklift, or other equipment with forks to place these large ramps over the hose carefully.

Available sizes

12" Hose Ramp – provides ramp over (2) 12" hose lines, or (1) Hose line. Note: use of equipment to move is required.

8" hose Ramp - provides ramp over (2) 8" hose lines

6" Hose Ramp – provides ramp over (2) 6" Hose Lines or (1) 6" line

Features

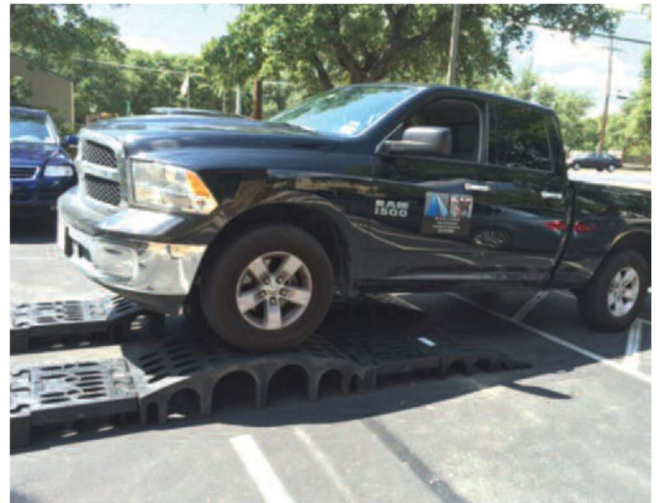
- Hand holds for easy movement on 6" and 8" versions
- Modular interlocking design is lightweight, easy to transport, setup, disassemble, and store
- Diamond tread surface to provide traction

Disclaimer: vehicles crossing ramps must have clearance higher than height of ramps

Disclaimer: 6" and 8" ramps are for vehicles with rubber tires only, no metal tracked vehicles allowed to cross over these ramps.

Note: contact US Fire Pump Sales for additional info.

NOTICE: ALTHOUGH THE INFORMATION AND RECOMMENDATIONS SET FORTH HEREIN (HEREINAFTER "INFORMATION") ARE PRESENTED IN GOOD FAITH AND BELIEVED TO BE CORRECT AS OF THE DATE HEREOF, US FIRE PUMP AND ITS AFFILIATES MAKES NO REPRESENTATIONS OR WARRANTIES AS TO THE COMPLETENESS OR ACCURACY THEREOF. INFORMATION IS SUPPLIED ON THE CONDITION THAT THE PERSONS RECEIVING SAME WILL MAKE THEIR OWN DETERMINATION AS TO ITS SUITABILITY FOR THEIR PURPOSES PRIOR TO USE. IN NO EVENT WILL US FIRE PUMP BE RESPONSIBLE FOR DAMAGES OF ANY NATURE WHATSOEVER RESULTING FROM THE USE OF OR RELIANCE UPON INFORMATION OR THE PRODUCT TO WHICH THE INFORMATION REFERS. NOTHING CONTAINED HEREIN IS TO BE CONSTRUED AS A RECOMMENDATION TO USE ANY PRODUCT, PROCESS, EQUIPMENT OR FORMULATION IN CONFLICT WITH ANY PATENT, AND US FIRE PUMP MAKES NO REPRESENTATION OR WARRANTY, EXPRESS OR IMPLIED, THAT THE USE THEREOF WILL NOT INFRINGE ANY PATENT. NO REPRESENTATIONS OR WARRANTIES, EITHER EXPRESSED OR IMPLIED, OF MERCHANTABILITY, FITNESS FOR A PARTICULAR PURPOSE OR OF ANY OTHER NATURE ARE MADE HEREUNDER WITH RESPECT TO INFORMATION OR THE PRODUCT TO WHICH INFORMATION REFERS.



FOR MORE INFORMATION VISIT WWW.USFIREPUMP.COM

US FIRE PUMP COMPANY, LLC
 27995 JAMES CHAPEL ROAD NORTH, HOLDEN, LA 70744
 MAILING: PO BOX 1810, ALBANY, LA 70711

EMERGENCY 24 HOUR RESPONSE: (225) 209-6551

© 2025 US Fire Pump Company, LLC. All rights reserved. All specifications and other information shown were current as of document revision date and are subject to change without notice.

