

## Sentry 16k Monitor Trailer

### Description

The Sentry 16K Monitor Trailer is designed for maximum protection of personnel and assets during firefighting operations. The trailer delivers a wide range from 10,000 gpm to 16,000 GPM (38,000 LPM up to 60,567 LPM of water or foam solution for fire suppression, cooling operations, vapor suppression, and more.

The 16k Monitor Trailer has GVWR of 15,000 pounds<sup>1</sup> (6,804 kg) provided in a tandem-axle configuration.

Heavy-duty GRP mesh decking material is provided on the deck surface to provide a non-skid standing / walking surface while operating the deck gun. An isophthalic polyester resin system insures a high level of corrosion and impact resistance necessary in applications such as chemical and water/wastewater processing. The material is electrically nonconductive and requires low maintenance cleaning easily achieved with a pressure washer.

The trailer frame rails are fabricated from structural channel with steel formed cross members. The ballast tank of 580-gallon is easily filled via the valves below the monitor. Ballast Tank is open to atmosphere like our other models. Drains located on the bottom of the unit. Trailer designed to combat 11,000 lb reaction of monitor with the use of outriggers affixed on each corner. The foldable units provide the stability needed to withstand the high reaction force. When in transport, outriggers are fixed in place with pins to ensure safe and secure travel.



### Features and Benefits

#### Selectable Nozzle

The 16K Monitor Trailer can be equipped with a variety of different monitor/ nozzles for different applications. Each 16k Monitor Trailer is outfitted with a 12" ANSI 150 flange for attachment of monitor to manifold, different flanges upon customer specification. Selectable nozzles are offered in hand operated or remoted controlled configurations.

#### Highly Efficient Waterway

The trailer inlet manifold can be customized in multiple sizes and connections. The monitor shall be designed with a waterway that minimizes flow, reduces friction loss, and produces a far-reaching stream.

#### Ease of Use

Welded on tie down points for transportation via flatbed.

Note: Specifications are for reference only and subject to change without prior notice.

Specifications vary depending on configurations and options.

Send inquiries to US Fire Pump for details.

<sup>1</sup>Dimensions and weight subject to change

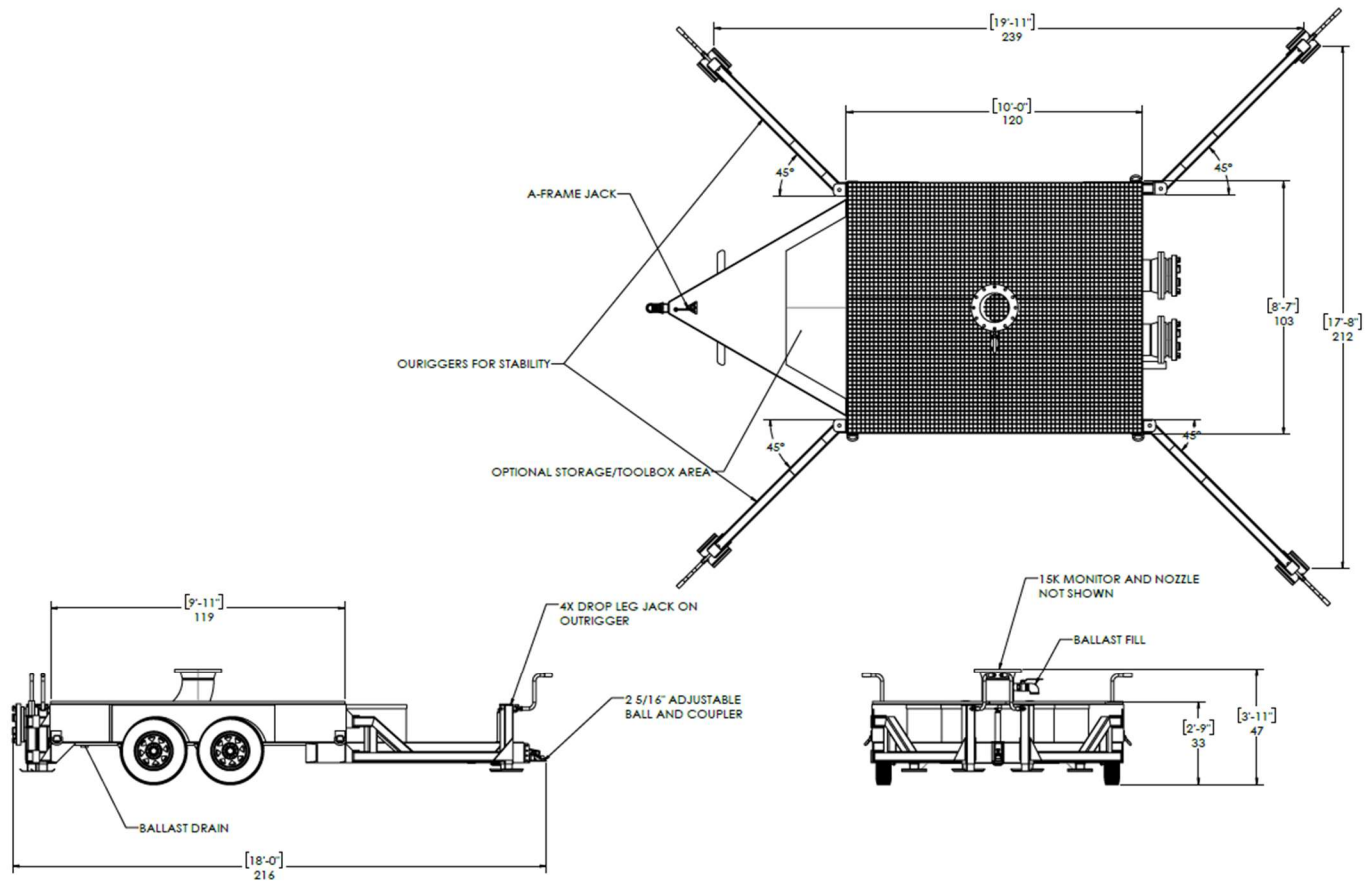
**FOR MORE INFORMATION VISIT [WWW.USFIREPUMP.COM](http://WWW.USFIREPUMP.COM)**

US FIRE PUMP COMPANY, LLC  
27995 JAMES CHAPEL ROAD NORTH, HOLDEN, LA 70744  
MAILING: PO BOX 1810, ALBANY, LA 70711

EMERGENCY HOUR RESPONSE: (225) 209-6551



© 2025 US Fire Pump Company, LLC. All rights reserved. All specifications and other information shown were current as of document revision date and are subject to change without notice.



NOTICE: ALTHOUGH THE INFORMATION AND RECOMMENDATIONS SET FORTH HEREIN (HEREINAFTER "INFORMATION") ARE PRESENTED IN GOOD FAITH AND BELIEVED TO BE CORRECT AS OF THE DATE HEREOF, US FIRE PUMP AND ITS AFFILIATES MAKES NO REPRESENTATIONS OR WARRANTIES AS TO THE COMPLETENESS OR ACCURACY THEREOF. INFORMATION IS SUPPLIED ON THE CONDITION THAT THE PERSONS RECEIVING SAME WILL MAKE THEIR OWN DETERMINATION AS TO ITS SUITABILITY FOR THEIR PURPOSES PRIOR TO USE. IN NO EVENT WILL US FIRE PUMP BE RESPONSIBLE FOR DAMAGES OF ANY NATURE WHATSOEVER RESULTING FROM THE USE OF OR RELIANCE UPON INFORMATION OR THE PRODUCT TO WHICH THE INFORMATION REFERS. NOTHING CONTAINED HEREIN IS TO BE CONSTRUED AS A RECOMMENDATION TO USE ANY PRODUCT, PROCESS, EQUIPMENT OR FORMULATION IN CONFLICT WITH ANY PATENT, AND US FIRE PUMP MAKES NO REPRESENTATION OR WARRANTY, EXPRESS OR IMPLIED, THAT THE USE THEREOF WILL NOT INFRINGE ANY PATENT. NO REPRESENTATIONS OR WARRANTIES, EITHER EXPRESSED OR IMPLIED, OF MERCHANTABILITY, FITNESS FOR A PARTICULAR PURPOSE OR OF ANY OTHER NATURE ARE MADE HEREUNDER WITH RESPECT TO INFORMATION OR THE PRODUCT TO WHICH INFORMATION REFERS.